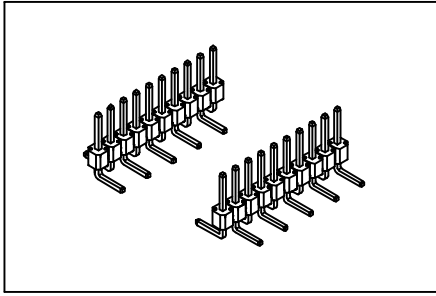


Pin Header 2.54mm(0.100")

GXCON



Material:

Housing: High temperature housing withstands IR and VPR soldering methods.

Contacts: Brass.

Plating: Gold plated over nickel.
Tin plated over nickel.

Electrical Characteristics:

Current Rating: 1 AMP.

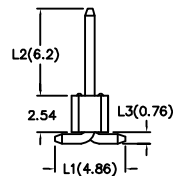
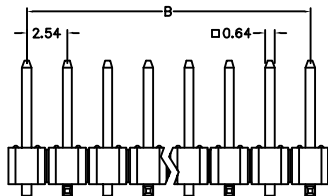
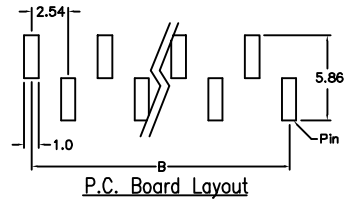
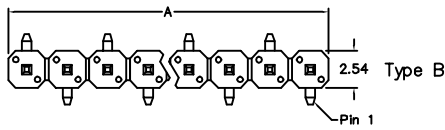
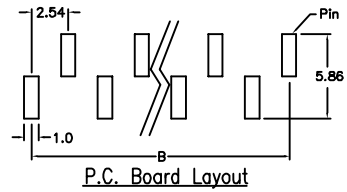
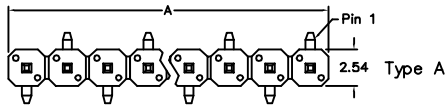
Insulator Resistance: 5000MΩmin. at DC 500V.

Contact Resistance: 20mΩmax. at DC 100mA.

Operating Temperature: -65°C ~ +125°C.

Features:

- * Single row Surface Mount.
- * Low profile insulator 2.54mm (0.100").
- * Two choices of foot print.
- * Customs design provides wide product flexibility.



| Position | 2 Thru 40 |
|-----------|--------------------------------|
| Dimension | |
| A | 2.54 X No. of Positions |
| B | 2.54 X No. of Positions - 2.54 |

Ordering information

PH03- 1 40 1 3 A
 Series Single Row No. of Pin Per Row 1: Gold Plated 2: Tin Plated 3: S.M.D Type *A: Type A Foot Print *B: Type B Foot Print

Custom Design: S.M.D. (i.e. PH03-14013A /L1 /L2 /L3)